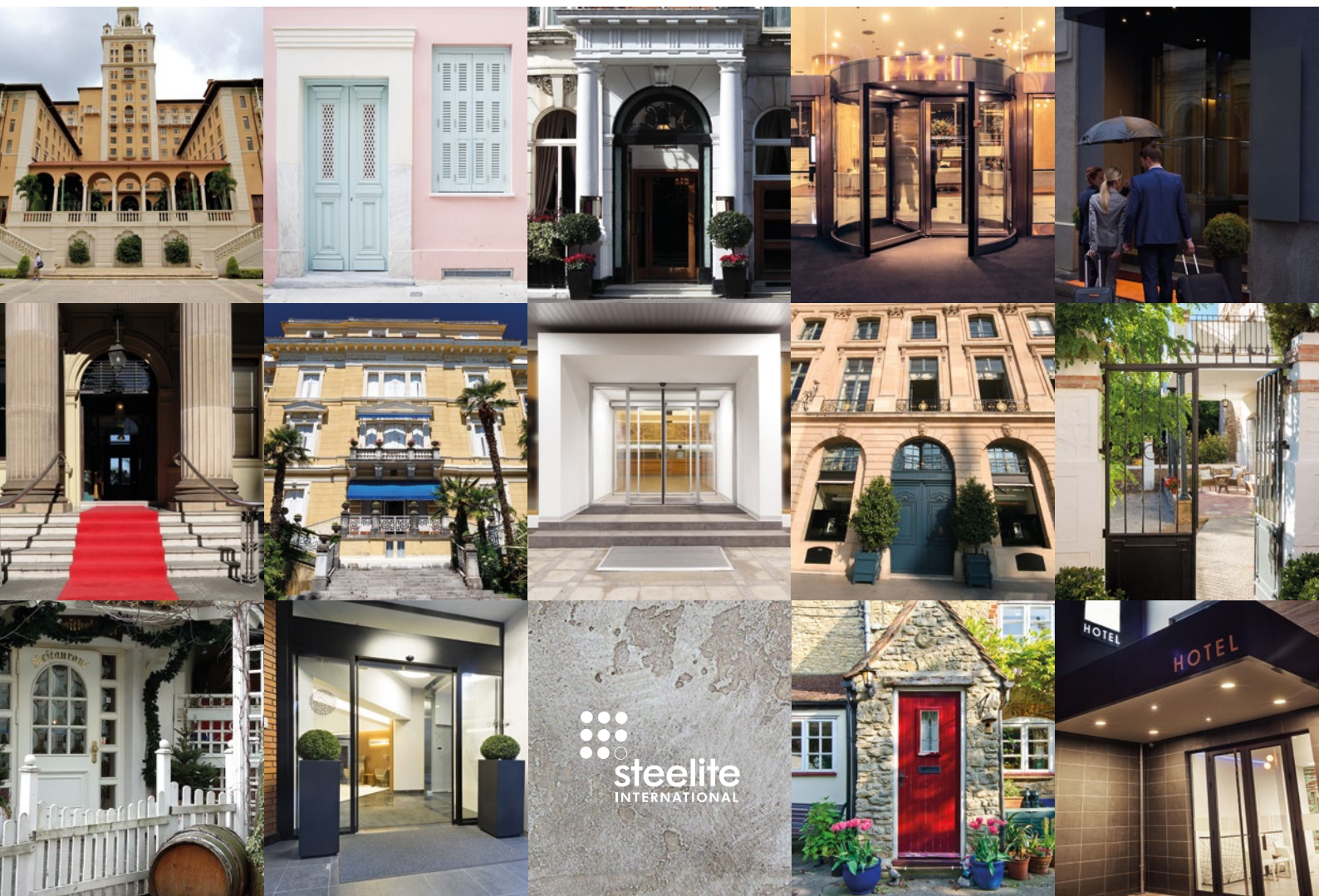




HOTEL DESIGN

eat sleep drink

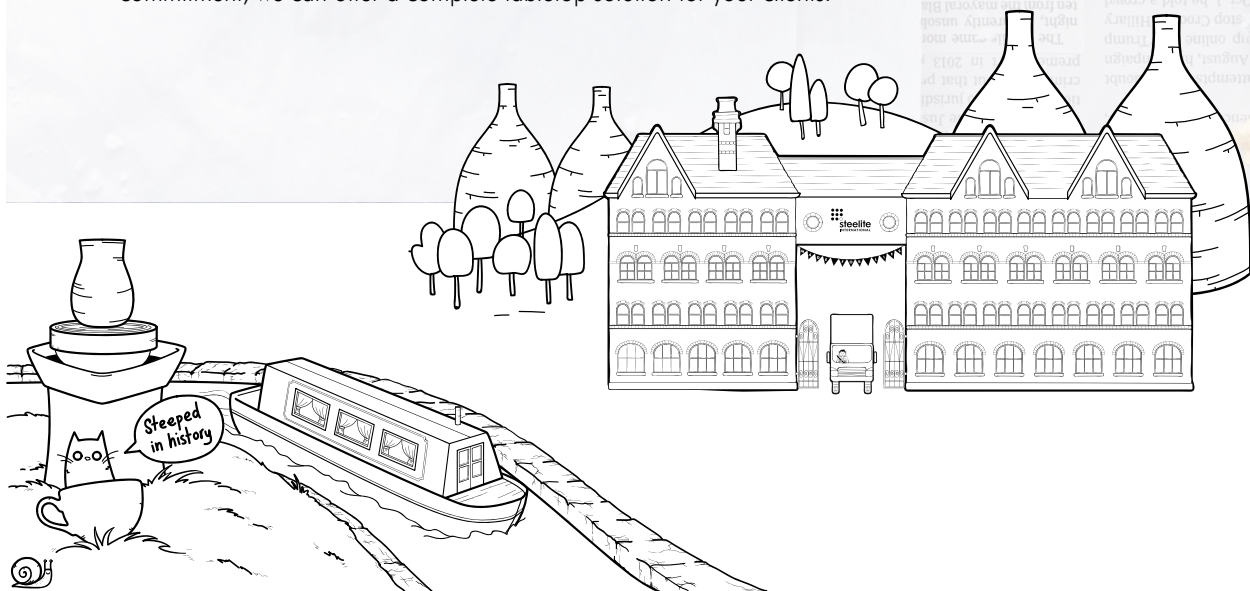




Bringing Innovation to The Table.

Steelite International is a world-leading manufacturer of award-winning, inspirational tabletop for the hospitality industry. A global supplier to more than 140 countries around the world.

We work exclusively for the out of home market and understand what is important to the hotel sector, both operationally and aesthetically. Our focus means that we are constantly responding to the requirements of the industry. With a group of specialist partners who share our passion and commitment, we can offer a complete tabletop solution for your clients.





When dining,

today's perceptive customer notices and critiques everything from the food and the service, to the style of presentation. Your choice of tableware is just as important as the interior and décor of the establishment, a well-presented table positively impacts on the overall dining experience. Steelite collections offer tabletop solutions for Luxury, Boutique, Upscale, Midscale and Budget Brands.

Steelite's commercial tableware has additional manufacturing processes when compared to retail ceramic. Designed to withstand the rigours of a busy, modern professional kitchen, with added strength and a high heat retention. Vitrified ranges from Steelite International manufactured in Stoke-on-Trent are covered by a lifetime edge-chip warranty. The initial investment when purchasing hospitality tableware versus a retail product may be higher, however longevity in service, production and low replenishment negates any additional cost.



Environmental Credentials

Steelite International work closely with a number of suppliers and organisations, and are continually monitoring, developing and improving procedures to create minimum impact on the community and environment, while ensuring maximum efficiency and cost savings for the future sustainability of the business.

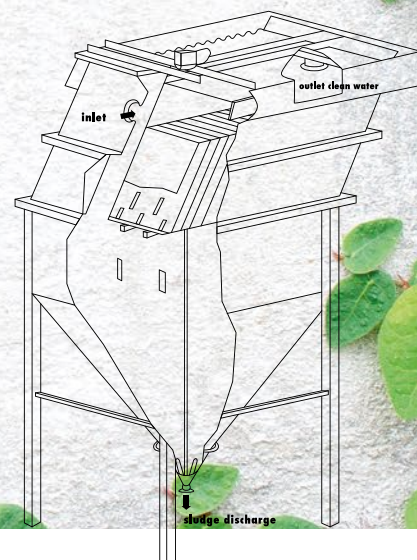
Steelite International is a member of The Green Organisation that rewards and promotes environmental best practice around the world, and the Staffordshire Business & Environmental Network, which aims to help local businesses reduce environmental impacts while also generating profits.

We have a dedicated and innovative approach to caring for the environment. In 2007, the business became one of only five companies in the UK to install a Lamella system. Steelite is the only tableware manufacturer to use a Lamella system for recycling clay waste.

In addition to clay recycling, fewer chemicals are now required to separate waste. This has a positive effect on the environment and water discharged from the site is also purer.



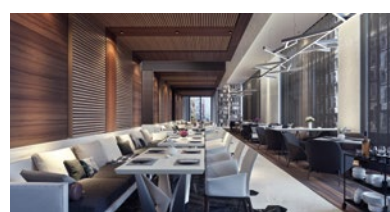
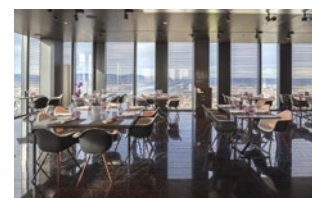
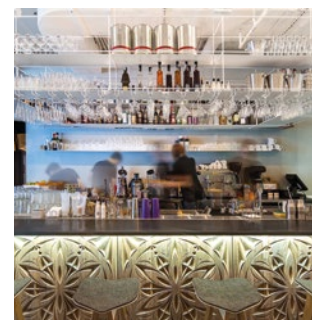
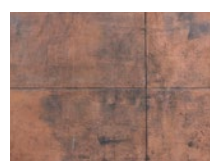
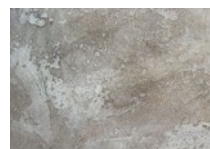
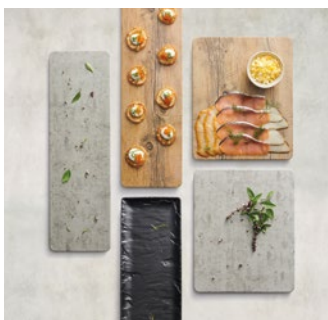
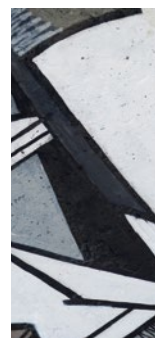
The Lamella has significantly reduced Steelite International's impact on the environment. The company now recycles in excess of 90% of manufacturing waste. In 2010 we received a Green Apple Award for the Lamella project.

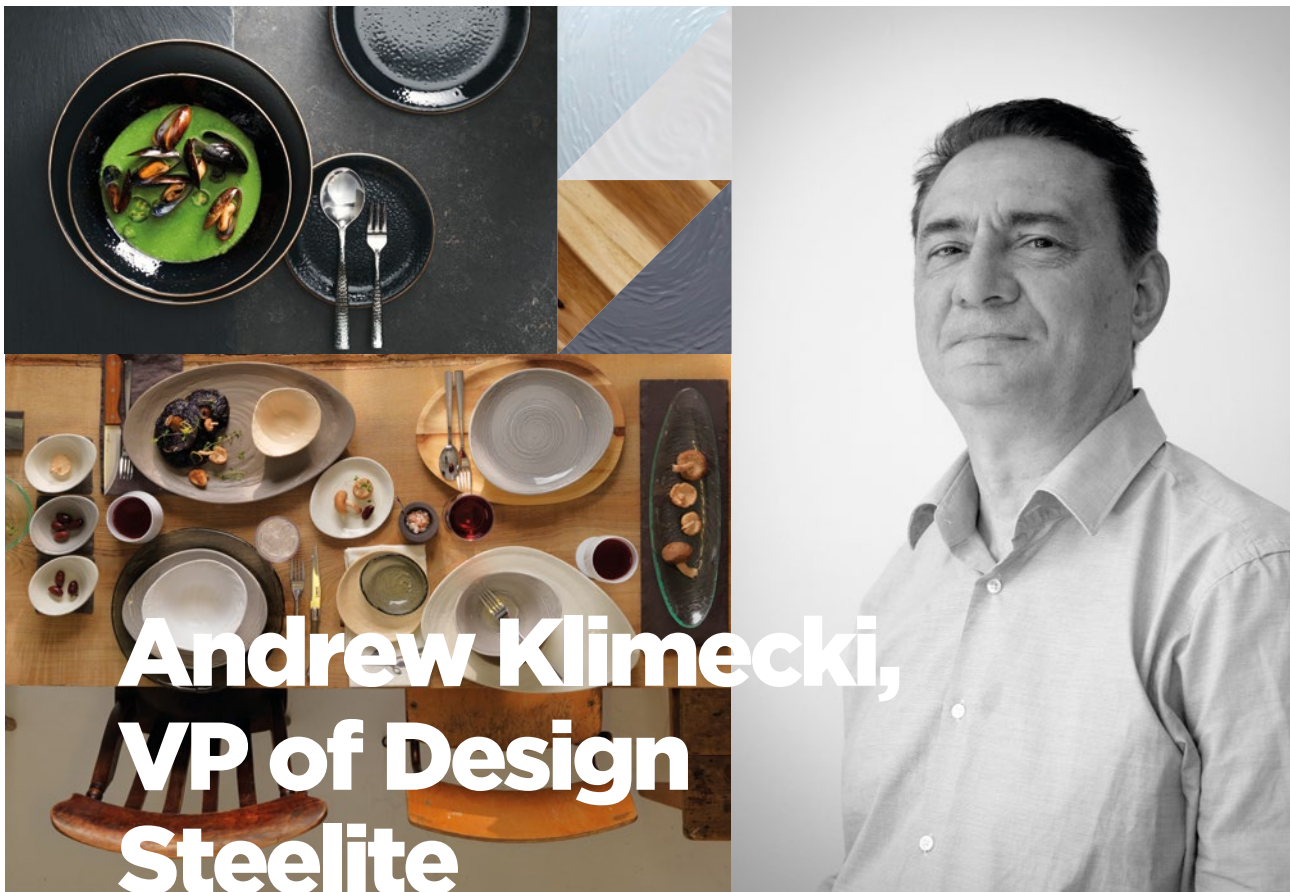




Consultative Service OS&E

Steelite International offer a consultative sales service that can help guide and advise you on the tableware options available. Products that will look great with the food and interior, whilst meeting your client's operator and design requirements.





Vice President of Design, Andrew Klimecki, has designed for Steelite International for 25 years. As the VP of Design, Andrew now has a huge toolkit to choose from. Tableware isn't just ceramic anymore. It's glass, melamine, and wood. As a designer, Andrew experiments and explores various materials to craft and create exciting new pieces for the hotel industry.

Andrew is a big believer in creating something of our time. He believes you should never set out to imitate someone else and he's always looking for a unique quality.

"When I first entered the tableware industry, there wasn't a lot of choice across the out of home market. Retail was driving all the trends. That's completely flipped. Hospitality is the major creative driving force, and it now influences retail. That's partly the influence of celebrity chefs – they became the new rock stars. Going to restaurants is one of the top leisure activities, and diners expect a show. That means the tableware must 'wow' be fit for purpose and function operationally.

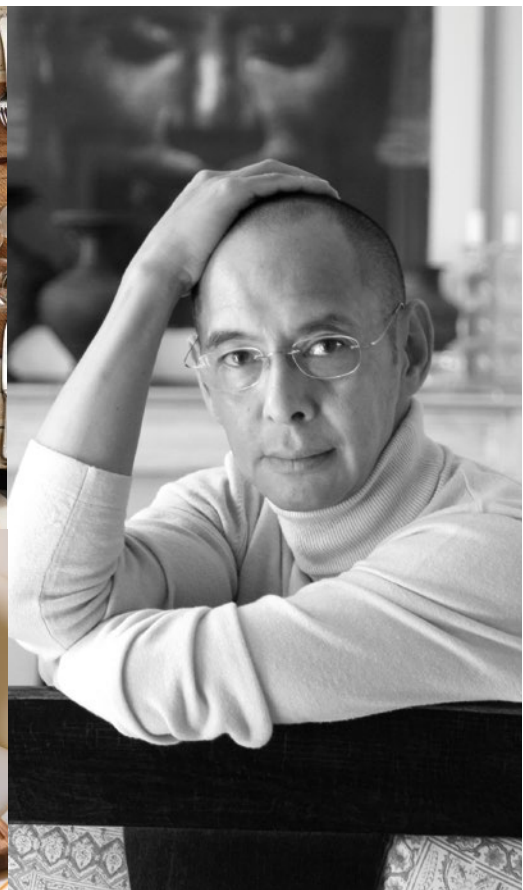


One of the first things people do now when they sit down to a meal in a restaurant, is photograph the table. They want to blog about it and share it on social media. That doesn't just mean the food; it means the whole experience. Tableware is not just the backdrop to the food, it's an experience enabler and it's just as important as the food.



In 2017, the stylish, embossed Willow collection that Andrew designed for fine dining and banqueting environments was awarded the sought-after Red Dot award for outstanding design





Rene Ozorio

Rene Ozorio has a long history of design experience, having been the designer of porcelain tableware concepts for Bernadaud and J L Coquet along with his own brand "Rene Ozorio." With his vision and expertise, he led the tabletop design for the Shangri-La Hotels international refurbishment.

His work extends to retail as well having created highly successful dinnerware lines for major international retail companies like Crate & Barrel (US), Marks & Spencer (UK), and Alinea (France).

His background and experience earned him interior design consultancy opportunities with a number of top hotel chains including The Mandarin Oriental, The Four Seasons, The Peninsula and Le Meridien Groups.



I have been involved in product design and have since 2001, created retail and hospitality products for global distribution. The product areas I have worked in are tableware – porcelain, bone china, ceramic, stainless steel, glass and textile.



In relation to my work as Interior Designer, I have also designed and produced furniture for hotel and restaurant projects."

RENE OZORIO



Catherine Hurand

Trained in the most prestigious Parisian schools of Les Beaux Arts (Fine Arts) and Les Arts Décoratifs (Decorative Arts), Catherine Hurand is a sculptress and uses her craft in many fields such as architecture, design and visual arts.

Attracted to the rough aspect of the mineral world, part of her work is dedicated to glass, a material Catherine Hurand fluxes so it becomes a living moving material she can work either as monumental pieces or turn into tiny subtle works of art.

Award winner for Talents à la Carte in 1998 for the decorative arts salon Mason et Objet, Catherine has created services for prestigious customers, including the famous three star chef Alain Ducasse.





Robert Gordon

For over 70 years and three generations, Robert Gordon Australia has been making quality pottery.

The brand stands for craftsmanship and creativity, and has been built around the importance of its heritage. Robert Gordon pieces are created with a strong focus on innovation and design.

Synonymous with quality, these porcelain products are designed and developed in Australia then handed over to China for production, ensuring the Australian aesthetic is not lost. Robert Gordon items are vigorously tested to ensure it will withstand the most demanding commercial kitchens.

The team at Robert Gordon say, "Robert Gordon is proud to partner with fellow potters Steelite International. It's been amazing to collaborate with makers, who understand the art of pottery and share the passion of the craft."

**ROBERT
GORDON**
AUSTRALIA
POTTERS SINCE 1945



tzelan

Alison Chi is the enterprising force behind the tzelan brand whose unique sensitivity to beautiful design and contemporary, everyday living drives tzelan's day-to-day creative vision. A holistic branding and lifestyle studio, with roots in luxury hospitality and design. Through the synergies of tzelan's creative philosophy and Steelite's innovative design and global resource network, we have established a new outlet that allows you to create a unique identity for your tabletop. Whether you are looking to complement your interior design or capture the flavour of your menu, we can offer a bespoke solution that will express the essential character of your vision.

{ tzelan works for people, not projects }

tzelan works with a broad range of brilliant, award-winning artists, artisans, creative consultants, developers, hospitality groups and manufacturing partners from around the world to create and build new and meaningful brands, tangible craft and heritage products, as well as simple everyday objects that celebrate life's most ritual pleasures.

t z e l a n



Luxury Reference List



- Austria**○ Hotel Am Konzerthaus Vienna MGallery by Sofitel, Vienna
- Belgium**○ Crowne Plaza, Brugge
- Croatia**○ Hilton Imperial, Dubrovnik
Radisson Blu Resort & Spa at Dubrovnik Sun Gardens, Dubrovnik
- Cyprus**○ Amathus Beach Hotel - Leading Hotel of the World, Limassol
- Estonia**○ Hilton Tallinn Park, Tallinn
Swissotel, Tallinn
- France**○ Club Med
Four Seasons Hotel George V, Paris
Hotel Renaissance Arc De Triomphe, Paris
Paris Marriott Rive Gauche Hotel, Paris
- Georgia**○ Tbilisi Marriott Hotel, Tbilisi
- Germany**○ Hilton Munich City, Munich
Mercure Relax Concept
Pullman Hotel Berlin Schweizerhof, Berlin
Ritz-Carlton, Berlin
- Hungary**○ Four Seasons Hotel Gresham Palace, Budapest
Marriott, Budapest
- Italy**○ Four Seasons Hotel Firenze, Florence
Hotel Principe di Savoia - Dorchester Collection, Milan
JW Marriott Venice Resort & Spa, Venice
Park Hyatt Milan, Milan
Rome Cavalieri, Rome
The Westin Palace Milan, Milan
- Netherlands**○ Art Otel Amsterdam Park Plaza, Amsterdam
Hilton, Amsterdam
Hilton Schiphol Airport, Amsterdam
Okura Amsterdam - Leading Hotels of the World, Amsterdam
Radisson Blu Palace Hotel, Noordwijk
Radisson Blu Hotel Schiphol Airport, Amsterdam
Sheraton Schiphol Airport, Amsterdam
- Portugal**○ Penha Longa Resort, Lisbon
- Romania**○ Novotel, Bucharest
- Russia**○ Novotel, St Petersburg
Radisson Blu Llimpiiski, Moscow
Swissotel Krasnye Holmy, Moscow
Swissotel Sochi, Moscow
- Spain**○ Hilton Diagonal Mar, Barcelona
Hyatt Centric, Madrid
Ritz-Carton, Tenerife
- Ukraine**○ Odessa Hotel, Kempinski
- United Kingdom** The Dorchester, London
The Savoy, London
- Switzerland**○ Baddrutts Palace, St. Moritz
Grand Hotel Zermatterhof, Zermatt
Novotel, Zurich
Widder Hotel, Zurich



United Kingdom & Republic of Ireland
Steelite International Ltd
Orme Street
Stoke-on-Trent
ST6 3RB
England

UK Distribution Centre
Steelite International Ltd
Station Street
Stoke-on-Trent
ST6 4NB
England

Telephone +44 (0)1782 821 000
Fax +44 (0)1782 819 926
Email headoffice@steelite.com

London Showroom
Steelite International Ltd
75 Wells Street
2nd Floor South
London
W1T 3QH
Telephone +44 (0)1782 249 599
Email london@steelite.com

Continental Europe
Telephone +44 (0)1782 829 347
Fax +44 (0)1782 829 484
Email c.europe@steelite.com

Benelux
Steelite International Benelux BV
's Gravelandseweg 258
3125 BK Schiedam
Nederland
Telephone +31 (0)20 617 5915
Email info@steelite.nl

Germany
Steelite International
Deutschland GmbH
Philipp-Reis-Straße 16
64404 Bickenbach
Telephone +49 (0)6257 61950
Fax +49 (0)6257 7944
Email germany@steelite.com

France
Telephone +33 6 8257 4291
Email france@steelite.com

Scandinavia
Telephone 0031 624 212 506
Email scandinavia@steelite.com

Italy
Telephone +39 0522 902051
Fax +39 0522 902017
Email italy@steelite.com

Spain
Steelite International Spain
C/General Espartero 18
03012 Alicante
Telephone +34 966 590 300
Fax +34 965 990 701
Email spain@steelite.com

Portugal
Telephone +351 918 550 429
Fax +351 211 541 022
Email info@steeliteportugal.com

Russia, Central & Eastern Europe
The Central Europe Consultancy
2nd Floor
3 Rosemont Road
London
NW3 6NG
Tel 0044 207 435 9033
Mob 00777 613 5088
Email rcee@steelite.com

Australia
Steelite International
Unit 45
Slough Business Park
2 Slough Avenue
Silverwater
NSW 2128
Telephone +61 (0)2 9648 4522
Fax +61 (0)2 9648 4523
Email australia@steelite.com

Canada
Steelite International Canada Ltd
Unit 2
26 Riviera Drive
Markham
Ontario
L3R5M1
Telephone +1 905 752 1074
Fax +1 905 752 1120
Email canada@steelite.com

Middle East
Steelite International Middle East
A Ronai LLC
PO Box 115944
Dubai
United Arab Emirates
Telephone +9714 341 4409
Fax +9714 341 4457
Email mea@steelite.com

Asia
Telephone +601 2347 9703
Fax +44 (0)1782 821 000
Email asia@steelite.com

United States of America
Steelite International USA Inc
154 Keystone Drive
New Castle
PA 16105
Telephone +1724 856 4900
Fax +1724 856 7924
Email usa@steelite.com

www.steelite.com

f facebook.com/steeliteinternational
t twitter.com/steeliteUK
i instagram.com/steeliteint

2000L302

